

# UNION SERV

**Skill, Experience, Knowledge, Commitment**

---

An industry leader in the local shipbuilding and offshore market

# Table of contents

**01** General  
Overview

**02** Resources

---

**03** Certifications

**04** Our  
Portofolio

---

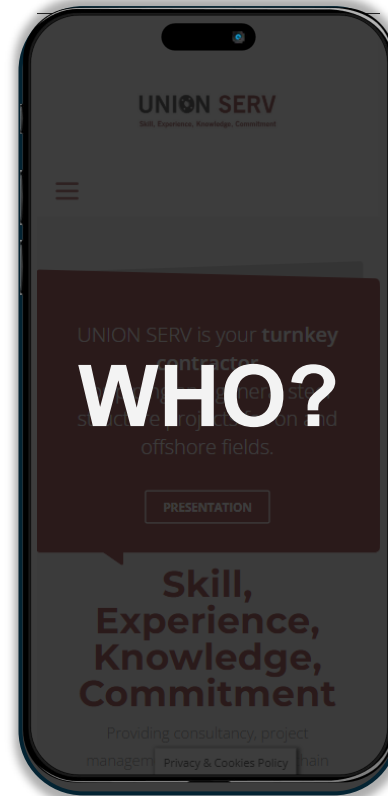
# 01

## General Overview

---

# UNION SERV

Romanian based turnkey contractor as  
manufacturer and assembler for onshore,  
offshore and shipbuilding projects



# UNION SERV

## MAIN AREAS OF ACTIVITY



Engineering, Procurement & Construction  
project management

Offshore  
Shipbuilding  
Oil & Gas



Manufacturing & installation

Metallic & Stainless steel  
structures  
Pressure vessel  
Carbon steel & Stainless steel  
high pressure piping  
Turnkey services



Maintenance &  
Refurbishment

Grid  
blasting & paint



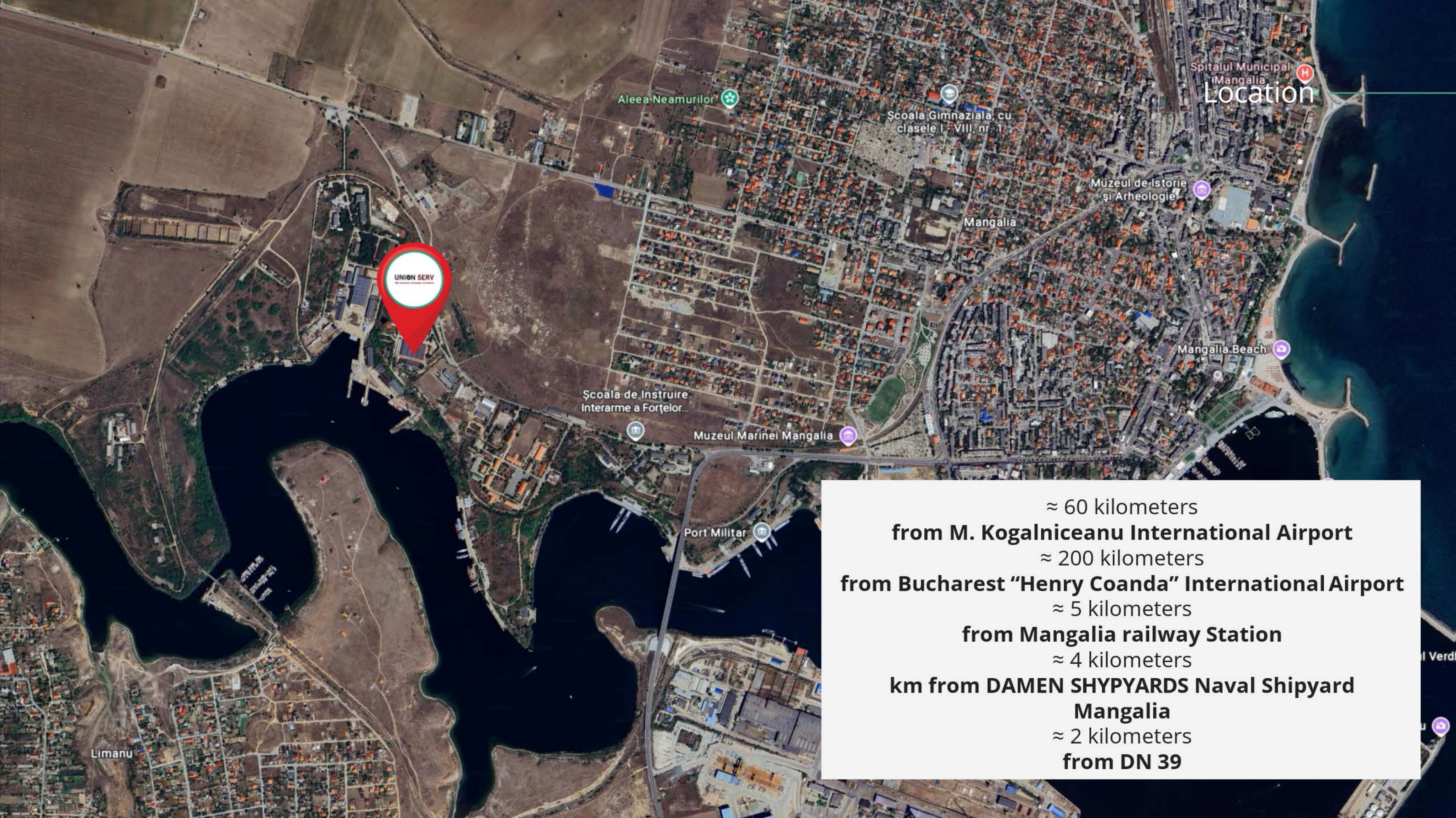
Testing  
& commissioning

NDT control



Ideally located at the heart of Europe's inland waterways with direct access to the Rhine-Main Canal, our location ensures swift and seamless waterway connectivity to Western Europe – reaching all the way to the Port of Rotterdam





Location



≈ 60 kilometers  
**from M. Kogalniceanu International Airport**  
≈ 200 kilometers  
**from Bucharest "Henry Coanda" International Airport**  
≈ 5 kilometers  
**from Mangalia railway Station**  
≈ 4 kilometers  
**km from DAMEN SHYPYARDS Naval Shipyard**  
**Mangalia**  
≈ 2 kilometers  
**from DN 39**

02

Resources

---

# PORT ACCESS

**UNION SERV**  
Skill, Experience, Knowledge, Commitment



# 40.0000sqm

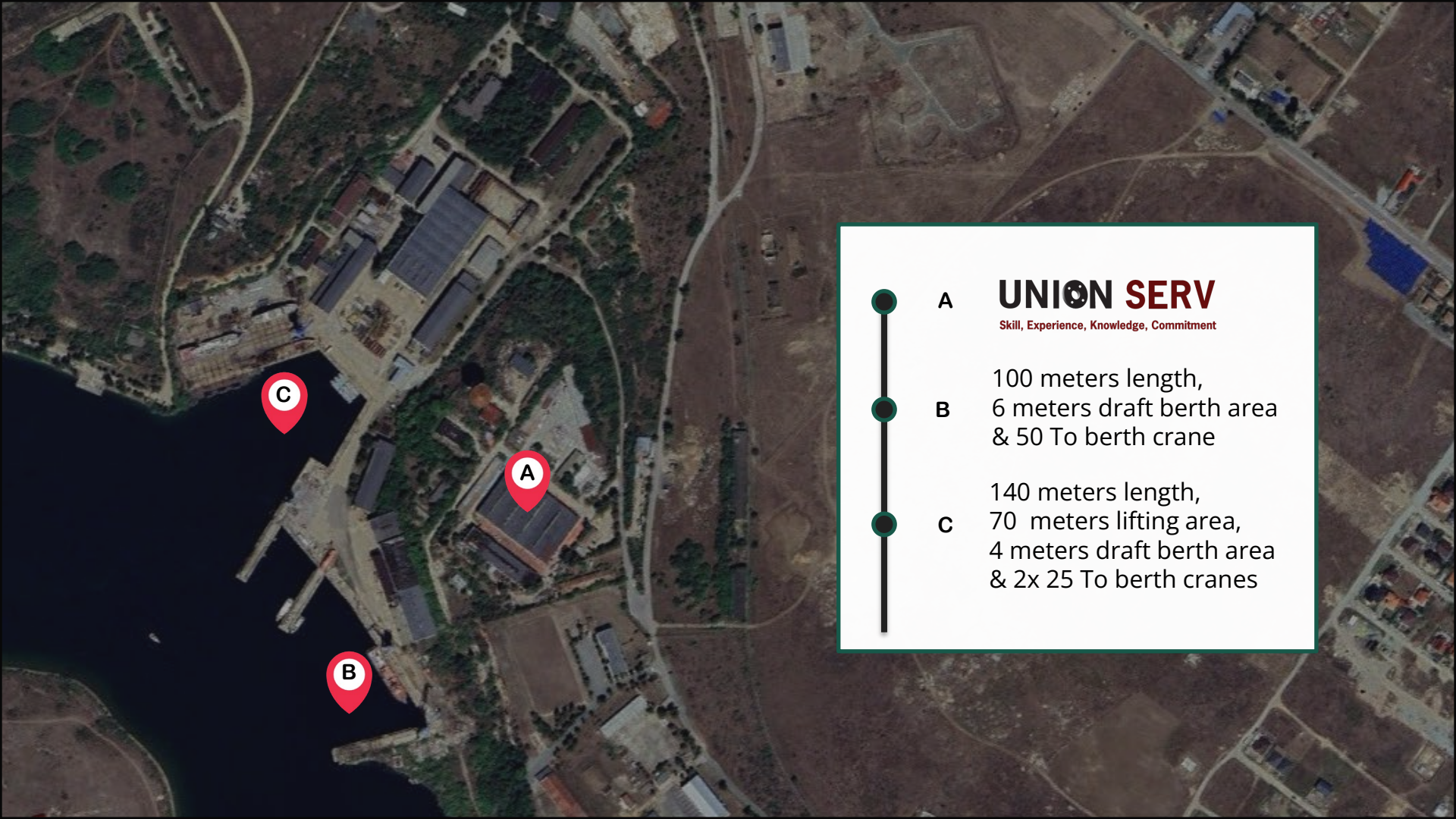
---

Usable area divided into distinct indoor and outdoor production, treatment and storage areas

Mangalia,  
Romania  
05500



DJ397



**A** **UNION SERV**  
*Skill, Experience, Knowledge, Commitment*

100 meters length,  
**B** 6 meters draft berth area  
& 50 To berth crane

140 meters length,  
**C** 70 meters lifting area,  
4 meters draft berth area  
& 2x 25 To berth cranes

# UNION SERV

Skill, Experience, Knowledge, Commitment

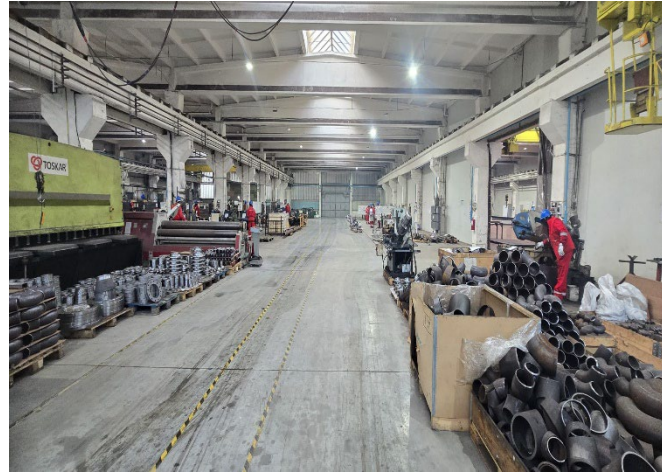
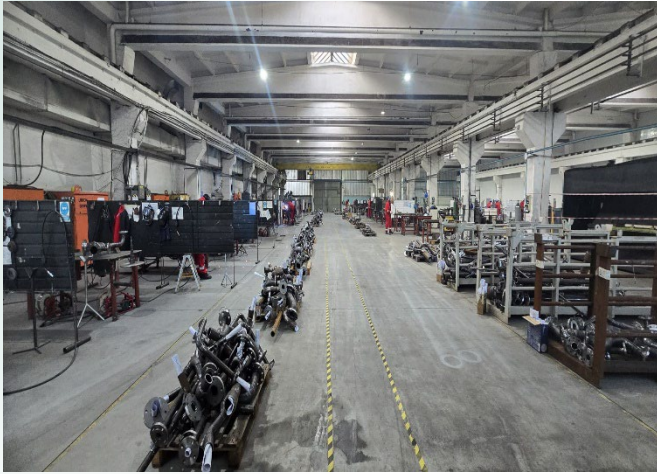
# 9000sqm

The fabrication facilities include 8 specialized bays dedicated to processing, assembly, painting, and blasting operations.

All fabrication bays are equipped with a manipulation crane up to 5T.

# Fabrication bays

---



Special  
materials

---



# Full equipped & insulated bay for special materials fabrication

---



Stainless steel  
CuNiFe  
Duplex  
Super duplex  
Titanium

Plasma cutting machine



Facilities for  
fabrication

---



Abkant



Welding machines

# Laser cutting machine

40<sub>kW</sub>  
[power unit]

12000x3200<sub>mm</sub>  
[max working area]

>120<sub>mm</sub>  
[thickness]



# Automatic welding machine

---

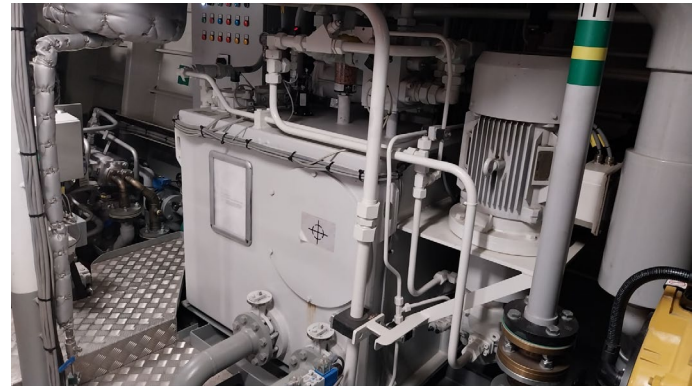


High-performance automatic welding machine  
with multi-torch, radial & axial automation  
for up to 7000 mm diameters.

# Our expertise includes full pipework system design and installations

For ballast water treatment & management, wastewater systems, cooling water, fire-fighting systems, hydraulic control systems, conventional fuel system and ECO

[a wide range of specialized materials, all sizes and types]



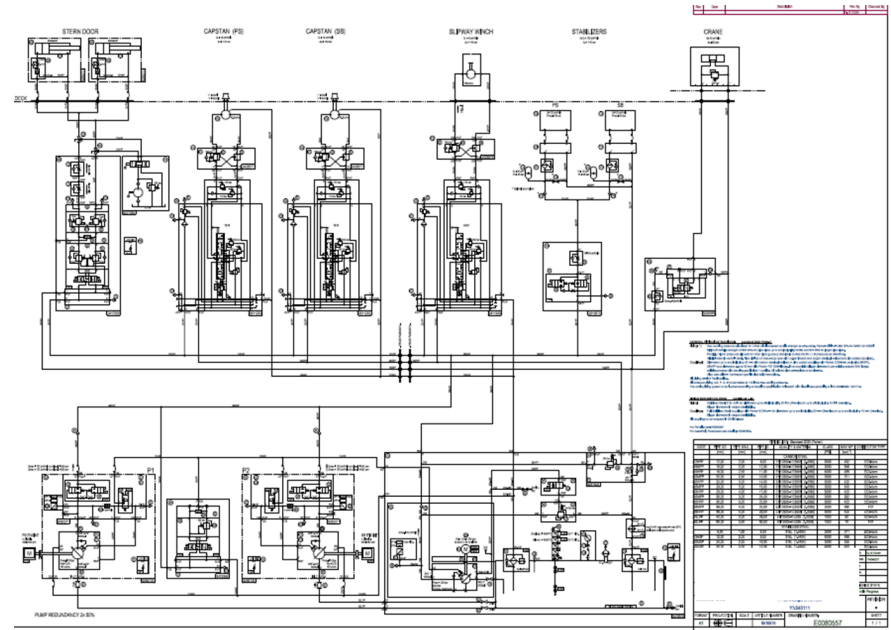
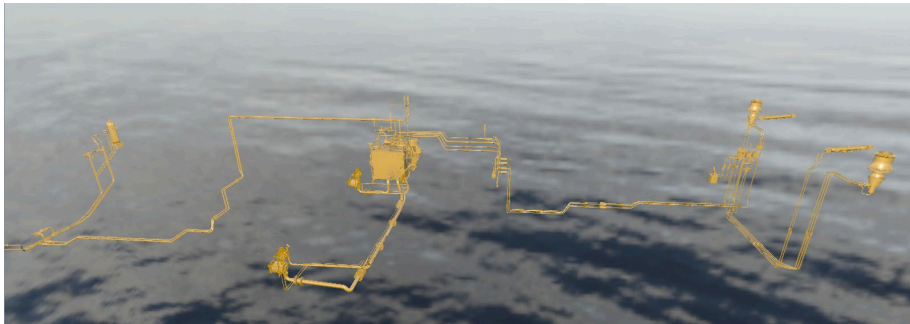
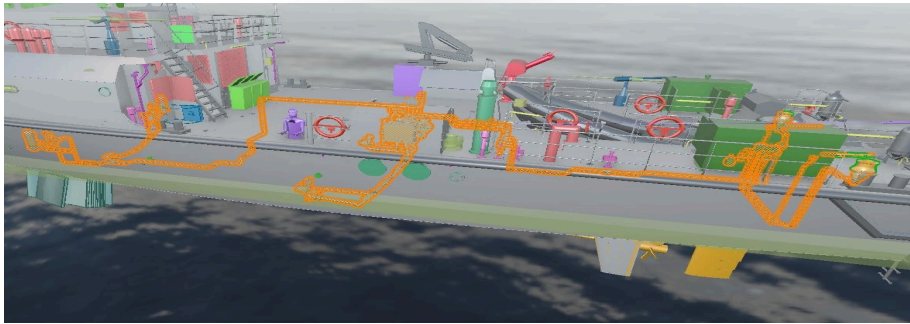


Our Engineering team conducts hydraulic, electrical, and structural analyses to ensure the design meets operational requirements, while also developing detailed drawings and documentation for prefabrication and installation.

3D Modelling  
**Structural Shop Drawings**  
Cutting Lists  
**Welding Map, Numbering & WPS Procedures**  
General & On-Site Follow-Up  
**E&I Support for the Fabrication Team**  
Mechanical Completion,  
As-Built Documentation & Master Dossier

Our design services include an initial survey, detailed design drawings using CAD software, and preparation of a full scope of work along with material specifications. Detailed engineering involves the creation of isometric drawings for all piping and structural needs, based on 3D modeling.

The entire process, from design to supply and installation, is carried out in full compliance with the Union Serv ISO 9001 Quality Assurance System and/or specific customer requirements, ensuring complete traceability of all project aspects.



# Installation & commissioning

---



Site management

Scaffolding

Auxiliary facility installation

Lifting plan  
& crane operation

Well tie-in

Installation of static  
& rotating equipment

Pressure testing



## Service & maintenance projects

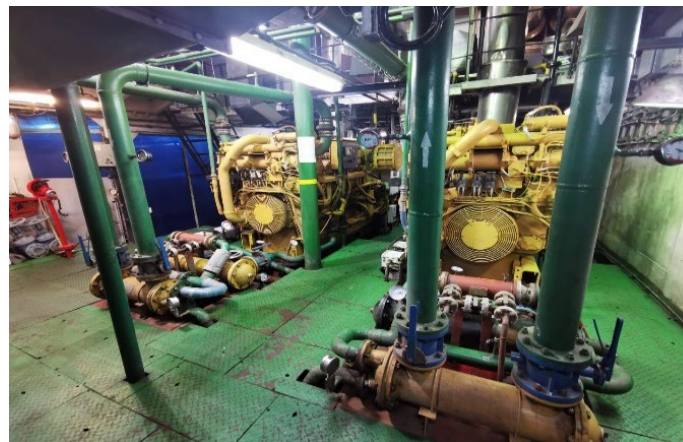
Process support for oil and gas facilities including electrical, mechanical and instrumentation

Maintenance and repair services for static & rotating equipment

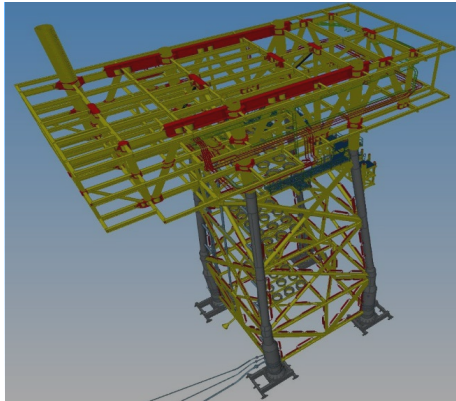
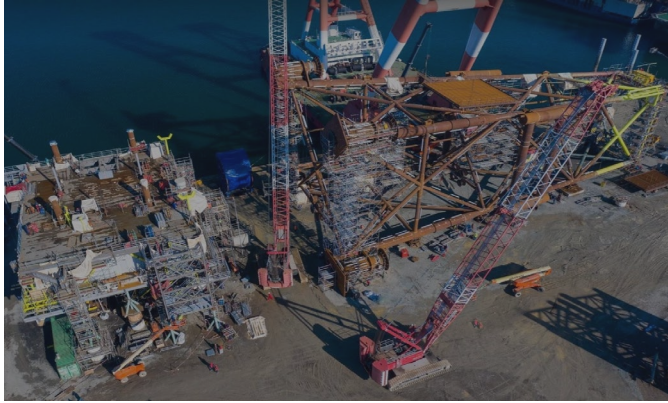
Maintenance and repair services for electrical instrumentation & control (up to 20kV)

Fabrication and mounting of industrial metallic structures

Enterprise Resource Planning (ERP) for business maintenance solutions



# Offshore samples



## FIELD ENGINEERING

Providing **Workshop Documentation** for structure and systems:

- Modelling
- Structural shop drawings
- Cutting sheets
- Welding map, numbering and WPS
- Piping
- E&I
- Mechanical completion, As-built and Master dossier
- General and site follow up
- Support for the fabrication team

## METHOD ENGINEERING

- Yard erection layout based on shipyard facilities
- Step by step fabrication sequence for jacket and topside
- Foundation structures design and local strength analysis using Finite element method for various stages of construction
- Lifting plan analysis for inshore and onshore lifting
- Mooring plan and mooring calculation for the jacket and topside load out
- Weight control report
- Support for the fabrication team

# Highly trained and experienced in a wide range of equipment and machinery

<b>Turbines</b>	GE – SGT 100, SOLAR, ABB
<b>Gensets</b>	Jenbacher, Caterpillar, Perkins, Deutz, FG Wilson, Wartsila
<b>Compressors</b>	Ingersoll Rand, Deutz, Dresser Rand, VPT Kompressoren, Ariel, AJAX, SOLAR, Termodine (Crio-Expander)
<b>Pumps</b>	Aversa, Hammellmann, Bornemann, Moyno, ACF, Johnson;
<b>UPS</b>	Automatica, Siemens, GE
<b>Cranes</b>	Liebherr, UMT, Sparrow, Heila
<b>Steam generators</b>	Aalborg, Clayton, Menarom, Sacke
<b>Static equipment</b>	Separators (2 phase and 3 Phase), Scrubbers, KO Drums, Flair and Vent, Piping, Chemical dosing and chemical injection skid's, Gas treatment skids (Joule Thomson)



# Organization and manpower

---

# Main concept for high performance



## Project management

PM & control manage based on PDCA concept



## Human resources

Comprehensive workforce database,  
mobilization of experienced  
personnel worldwide



## Supply chain management

JIT delivery for raw  
materials



## Engineering

Technical solutions & support  
for manufacturing  
and installation



**General Director**  
**Adrian BARI**

HSE

QA/QC

**Business Administration Manager**

**Technical development director**

**Production Management Director**

**Finance & Accounting**

**Welding Engineer**

**Project planning**

**Project Support**

**Maintenance**

**Sales & Project management**

**Marketing**

**Comercial**

**Contract Management**

**Cost Control**

**Technical Offer**

**Technical Support**

**Pipe fabrication**

**Internal Project management**

**Steel structure fabrication**

**Supply Chain management**

**Purchasing**

**Logistics**

**Offer prepare**

**Technical evaluation**

**Technical conformity**

**Production preparation**

**Shipbuilding & repair**

**External Project management**

**Offshore / Oil & gas**

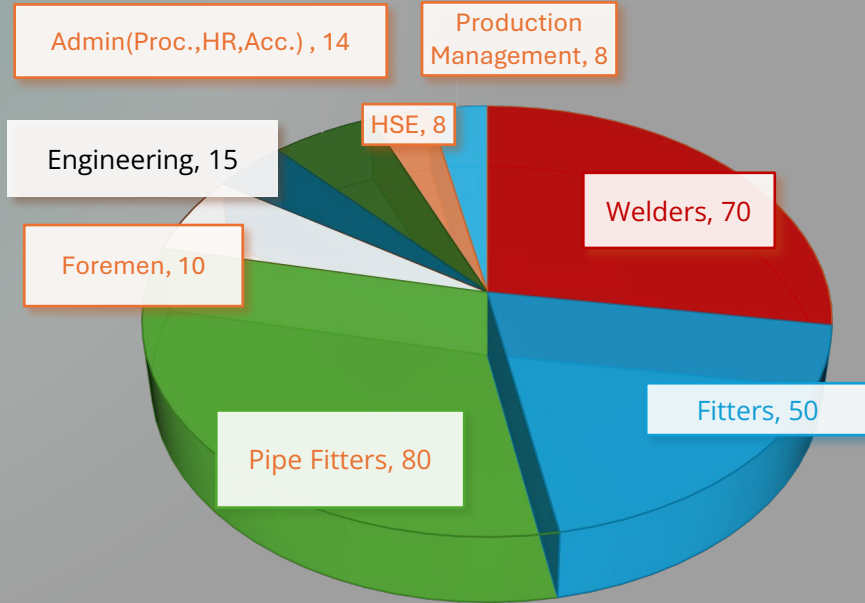
**Human Resources**

**Personal management**

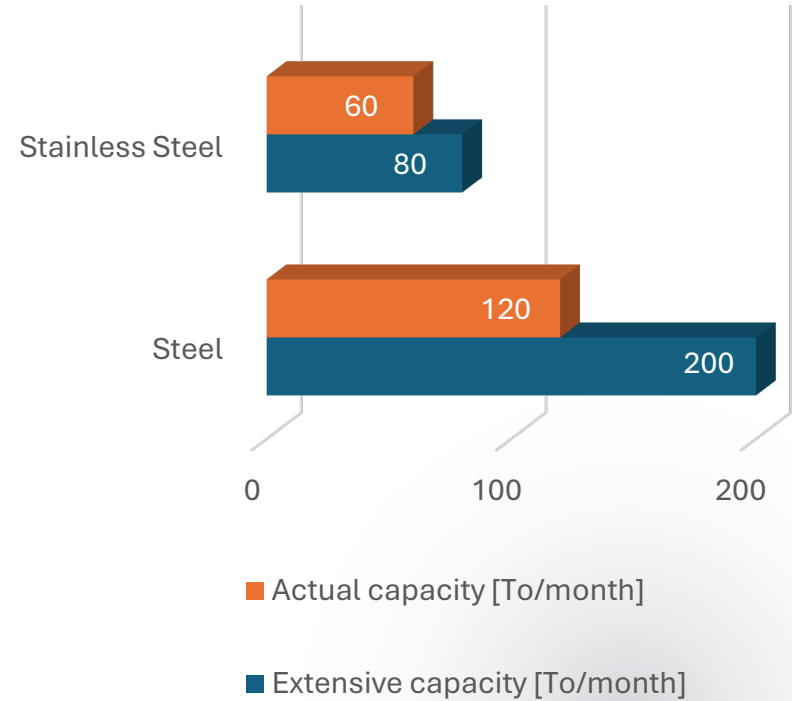
**Pay roll**

**IT & Digital Solutions**

## Human Resources



## Production Capabilities



# 03

## Certifications

---

# UNION SERV

Skill, Experience, Knowledge, Commitment

Implemented the Integrated Quality Management System  
since 2016



# 04

## Our portofolio

---

# The main subcontractor for the largest construction sites

## Romania

Headquarter

## Europe

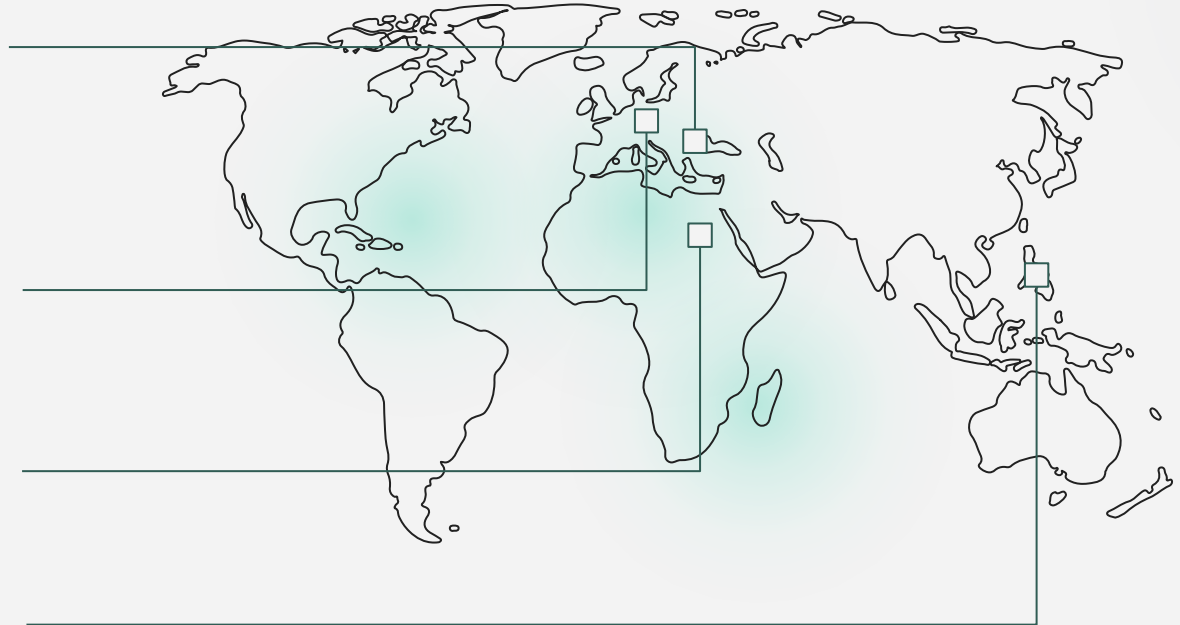
Netherlands, Italy,  
Denmark, Norway,  
Finland, Germany

## Africa

Egypt

## Asia

Korea



# OUR PROJECTS



# UNION SERV

**Skill, Experience, Knowledge, Commitment**

Thanks to our team's expertise and the dedication we bring to every project, we have become the leading subcontractor for some of the largest construction sites in Romania and across Europe.

**FINCANTIERI**

**Orsted**

**RAUMA MARINE  
CONSTRUCTIONS**

**DSME**

**DAMEN**

**NEPTUN WERFT**  
ROSTOCK 1850

**Aker  
Solutions**

**GSP GRUP SERVICII PETROLIERE**  
member of UPETROM GROUP

**MEYER WERFT**  
PAPENBURG 1795

**BlackSea**  
oil & gas

**VARD™**  
a Fincantieri company

**VIKING**  
RIVER CRUISES

**S.G.C.**  
South Gas Company (State Company)

**DMHI** DAEWOO MANGALIA  
HEAVY INDUSTRIES

**SCOTTISHPOWER**

**Shipyards  
ATG  
Giurgiu**  
Since 1897

**ENERGEAN**

## Pipe manufacturing & install



H6275 - Enchanted Princess



H6286 - Ladies class II



H6306 - Seashore



H6299 - Leonardo II

## Pipe manufacturing & install



H879 - Luntos



H870/1

## Pipe spool fabrication



**Orsted**

Sunrise Wind

## S/O fabrication & installation



  
**SCOTTISHPOWER**

East Anglia 3

 **Aker  
Solutions**

**UNION SERV**  
Skill, Experience, Knowledge, Commitment

## Offshore structure manufacturing & installation



ENERGEAN

Kavala



 **GRUP SERVICII PETROLIERE**  
member of UPETROM GROUP

Akçakoca Jacket

**UNION SERV**

Skill, Experience, Knowledge, Commitment

## Vessel manufacturing & installation



PCK



Timra

## Pipe spool fabrication



**DAMEN**

**UNION SERV**  
Skill, Experience, Knowledge, Commitment

## Retrofit manufacturing



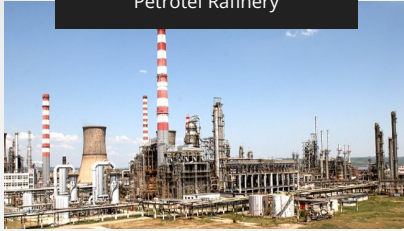
**UNION SERV**  
Skill, Experience, Knowledge, Commitment

## Jacket & Top side Ana platform



# Maintenance and Upgrades

Petrotel Refinery



Static equipment manufacturing and replacement during the TAR

- Lukoil

PetroBrazi Refinery



Static and Rotative Equipment repairs and maintenance during the TAR

- OMV Petrom

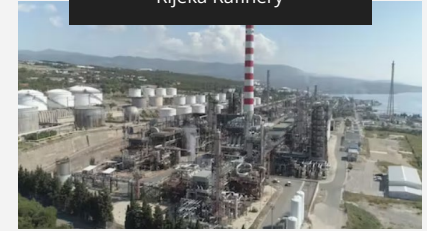
GTP and Offshore jacket



Operations and maintenance of Gas Treatment Plant & unmanned offshore jacket, in Varna, Bulgaria

- Petroceltic

Rijeka Refinery



Upgrade – Mechanical erection

- INNA Group

Cement Factories



Turnaround for cement factories in Hoghiz, Medgidia and Tasaul – Romania

- ROCIM – CRH Group

Port operation terminal



Repairs and upgrade of various transport equipment

- COMVEX S.A.



Hull  
erection &  
assembly

S/O installation

Pipe installation



**UNION SERV**

Skill, Experience, Knowledge, Commitment



Jacket Fabrication  
Top Side Fabrication  
Auxiliary structural items for Top Side  
Piles foundation

**UNION SERV**  
Skill, Experience, Knowledge, Commitment





## Site installation for Midia Gas Treatment plant - BSOG

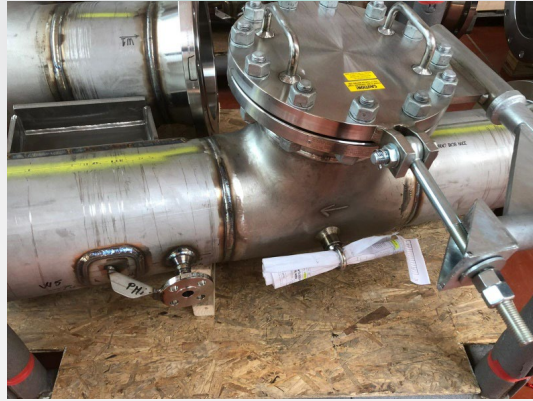




Construction and  
commissioning of  
Oil & Gas rigs











**THANK YOU!**

---

# UNION SERV

**Skill, Experience, Knowledge, Commitment**



+40 743 333 881  
+40 749 998 660  
+40 743 333 885



Intrarea Portului street, no. 1  
905500 Mangalia, Romania



[www.unionserv.ro](http://www.unionserv.ro)



[office@union-serv.com](mailto:office@union-serv.com)